

Let's remember that you must:



- Treat others with respect.
- Be kind and listen to your classmates silently.
- Raise your digital hand to ask or answer questions.
- Come to class prepared in every way, be ready to learn and participate.
- Show respect to your teacher and classmates and **DO NOT** draw on the presentation.



Thursday
April 30th, 2020

Objectives:

PET SPEAKING PART 1

Information



Tips



Strategies



Practice



What do we have to do in this section?



A simple interview with the **examiner**.

This section lasts only **2 minutes**.

Most questions revolve around **your personal information**.

Are these questions difficult?

No, it all depends on **HOW** you answer these questions.





TIP N°1

RELAX!

Questions are usually related to your personal information.



DOs



DON'Ts



TIP N°2

HELP! I DIDN'T UNDERSTAND THE QUESTION!

Don't worry. Politely ask the examiner to repeat it.

- Please could you repeat that?
- Could you say that again, please?





TIP N°3

USE THE GRAMMAR OF THE QUESTION IN YOUR ANSWER

Here is a silly mistake!

A: Where do you **live**?

❖ B: I **am living** in Talca.

This is a better option.

A: Where do you **live**?

✓ B: I **live** in Talca, but I **am** from Santiago.

✓ B: I **currently live** in San Clemente, 15 minutes from school.

Do you have to always use this method? No, but it will help you to avoid mistakes.





TIP N°4

USE KEYWORDS AND SYNONYMS

Using keywords inside the questions and synonyms related to the same topic help you to show off your English level.

A: Who do you live with?

❖ **B: With my parents, sisters and brother.**

✓ **B: I live with my parents and siblings.**



TIP N°5

JUSTIFY YOUR ANSWER!

It is okay to give a small answer here, but you should NEVER just says YES or NO! that is a short answer and it is incorrect!

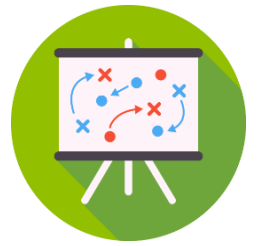
A: Where do you live?

❖ B: Talca

✓ B: I live in San Javier, but I used to live in Valdivia.

Understand the question. if you didn't, remember to ask the examiner to repeat it.

STRATEGIES



SPEAKING
Part 1

Where do you live?

Identify the verb used in the question

Identify the keywords and try to use them as part of your answer.

What should I do first?



Choose one of these questions and put into practice the previous strategies.



SPEAKING
Part 1

1. Who do you live with?
2. Where do you live?

What should I do first?



Choose one of these questions and put into practice the previous strategies.

STRATEGIES



SPEAKING
Part 1

1.- How often do you use a mobile phone?

2.- How do you get to school everyday?

Challenge yourself





TRY AGAIN

A **New Speaking Activity** is available in the blog!

Remember that when you work with the Google Form page (blog activities) You must:

Include your **name** and **last name**.

Complete **every single task given**.



**ENVÍAME TUS DUDAS Y
CONSULTAS A MI CORREO.**

esepulveda@colegioingles.cl

