

MY DEAR STUDENTS, THIS TASK IS FOR YOU TO

PRACTICE WHAT WE HAVE BEEN COVERING

DURING THESE WEEKS.

REMEMBER THE IMPORTANCE OF SITTING IN A

QUIET PLACE TO COMPLETE THE ACTIVITIES FOR

TODAY.

MAY 14TH, 2020

TODAY WE WILL: READ A TEXT AND REFLECT ABOUT US AND OUR FAMILIES.

BEFORE WE START, REFLECT AND ANSWER THESE QUESTIONS

- 1. IS YOUR FAMILY IMPORTANT TO YOU? WHY?**
- 2. DO YOU HELP YOUR PARENTS AT HOME?**
- 3. IS IT IMPORTANT TO EAT WITH YOUR FAMILY? WHY?**

NOW, LET'S MAKE A SHORT REVIEW

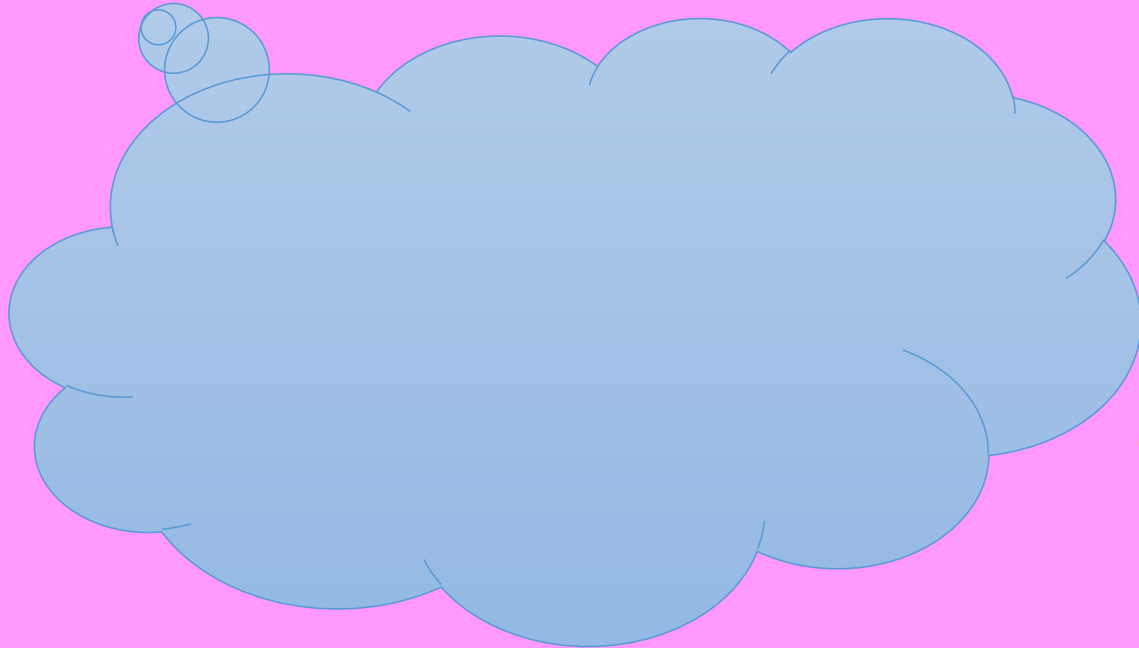
Affirmative	Negative	Interrogative
I go	I don't go	Do I go ?
You go	You don't go	Do you go ?
He goes	He doesn't go	Does he go ?
She goes	She doesn't go	Does she go ?
It goes	It doesn't go	Does it go ?
We go	We don't go	Do we go ?
You go	You don't go	Do you go ?
They go	They don't go	Do they go ?

TEXTBOOK PRACTICE

1. GO TO **PAGES 18 AND 19.**
2. READ THE TEXT ON **PAGE 19.**
3. COMPLETE THE “WORD CHECK” SECTION AT THE END OF **PAGE 19**
WITH WORDS **HIGHLIGHTED** IN THE TEXT.
4. ANSWER QUESTIONS 1 TO 7 FROM *EXERCISE 3* ON **PAGE 18.**

BEFORE WE GO, REFLECT AND ANSWER

**I USED TO
THINK**



**NOW I
THINK**

